

# Opportunity for Independent Contractors!

199 North Woodbury Road, Pitman, NJ 08071



## DEMOGRAPHICS

	1 MILE	3 MILES	5 MILES
Population	8,491	57,229	122,498
Average HHI	\$117,165	\$132,921	\$139,692
Employees	4,383	17,488	38,070
Total Businesses	359	1,704	3,743



## LOCATION OVERVIEW

Building located on heavily trafficked road. Easy access to 55, 47, Hurffville-Cross Keys Road, and Philadelphia. Close proximity to Pitman, Glassboro, Washington Twp and Rowan University

## PROPERTY HIGHLIGHTS

- Professional office space available for lease
- Full service leases
- Available units are 374 SF & 750 SF
- On-site parking
- Pylon signage available



**ARROW**

Real Estate Services

Admin: 717 Limekiln Road, Doylestown, PA 18901  
 HQ: 555 E. City Line Ave, Bala Cynwyd, PA 19004  
 610.400.3018 | ArrowRealEstateServices.com

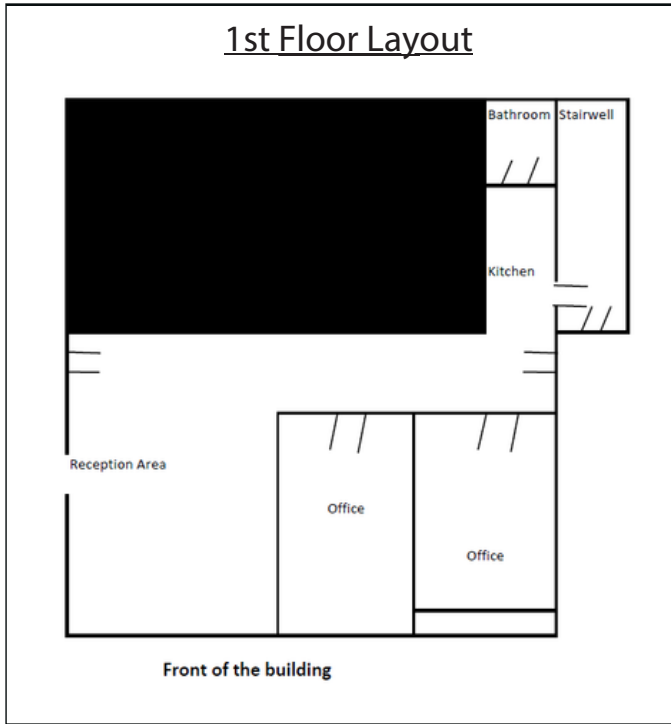
**TAMMY RATTACASA**

856.392.3735

TammyR@arrowcre.com

# Opportunity for Independent Contractors!

199 North Woodbury Road, Pitman, NJ 08071



## GROSS LEASE RATES APPLY

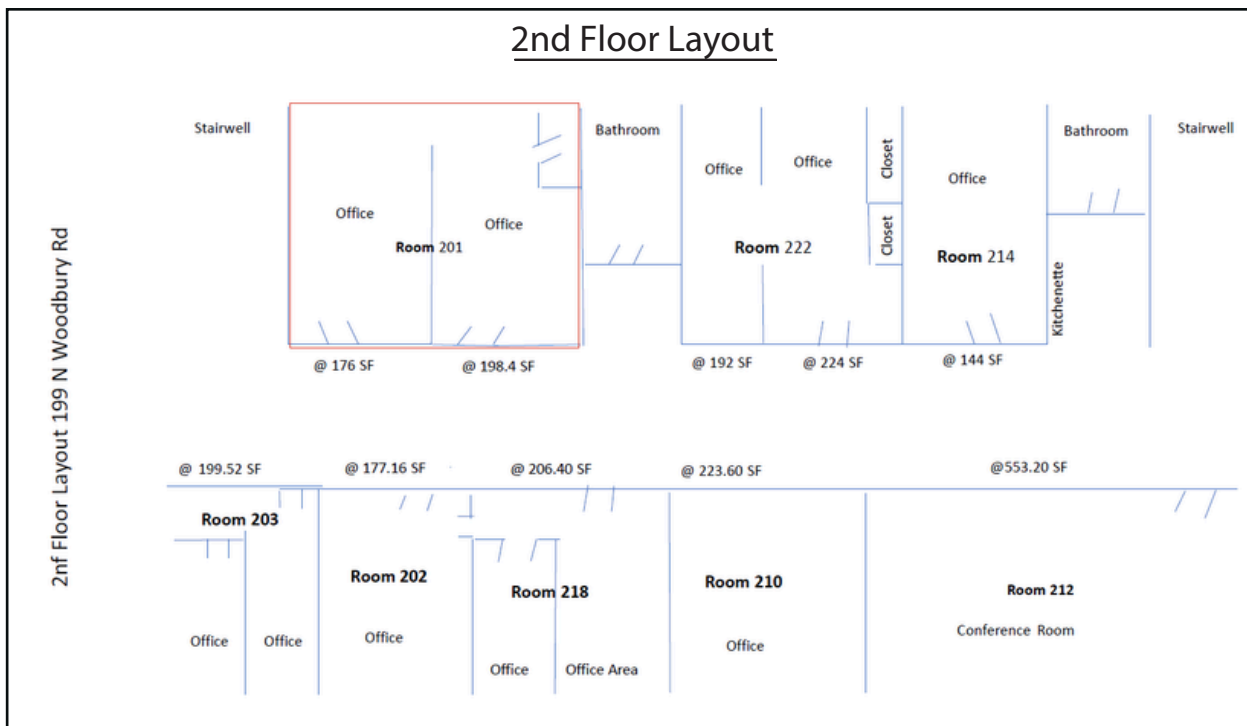
### AVAILABLE UNITS

1st Floor

Unit 101 - 750 SF

2nd Floor

Unit 201 - 374.4 SF



# ARROW

Real Estate Services

Admin: 717 Limekiln Road, Doylestown, PA 18901  
HQ: 555 E. City Line Ave, Bala Cynwyd, PA 19004  
610.400.3018 | ArrowRealEstateServices.com

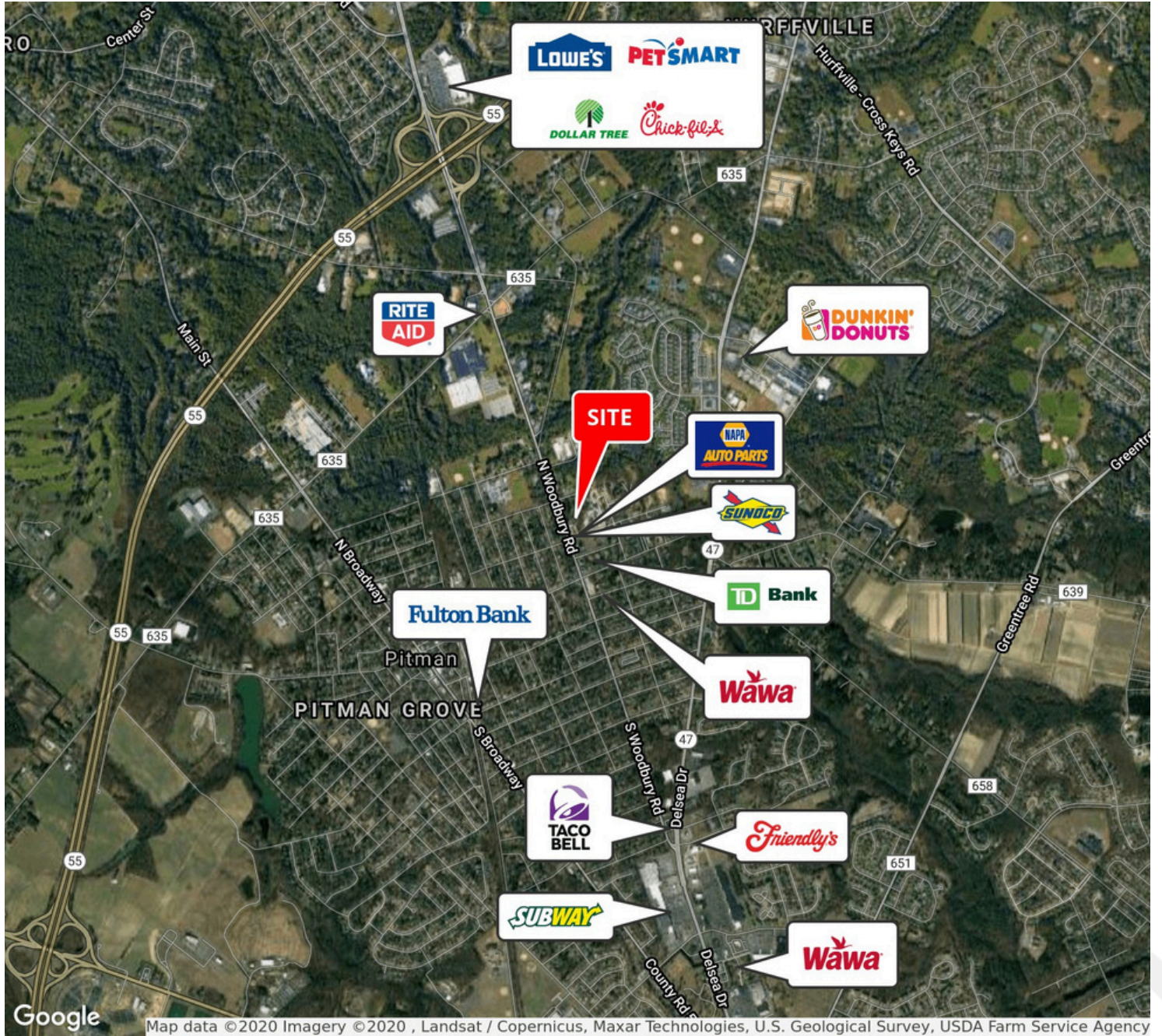
**TAMMY RATTACASA**

856.392.3735

TammyR@arrowcre.com

# Opportunity for Independent Contractors!

199 North Woodbury Road, Pitman, NJ 08071



## ARROW

Real Estate Services

Admin: 717 Limekiln Road, Doylestown, PA 18901  
HQ: 555 E. City Line Ave, Bala Cynwyd, PA 19004  
610.400.3018 | ArrowRealEstateServices.com

**TAMMY RATTACASA**

856.392.3735

TammyR@arrowcre.com